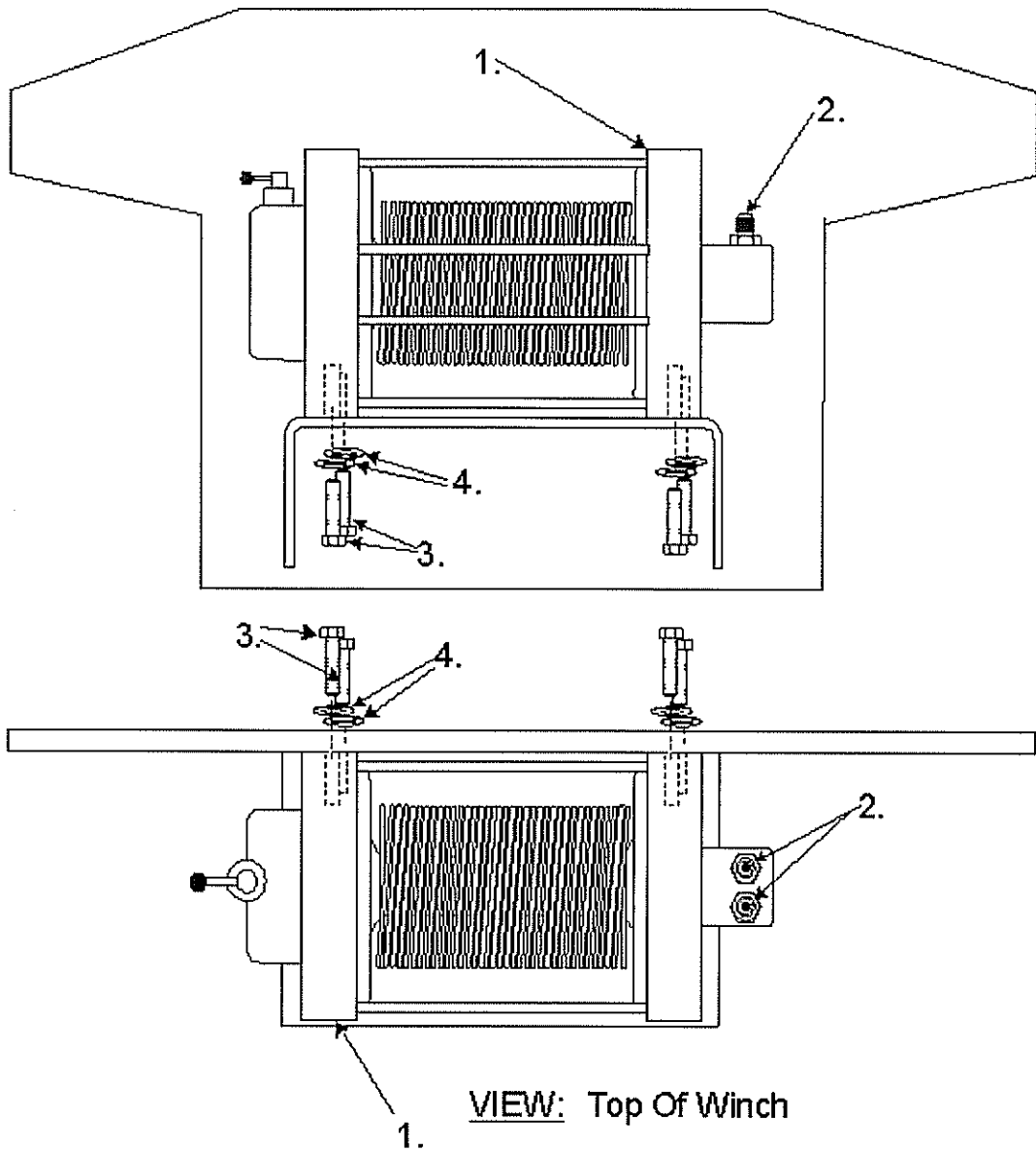
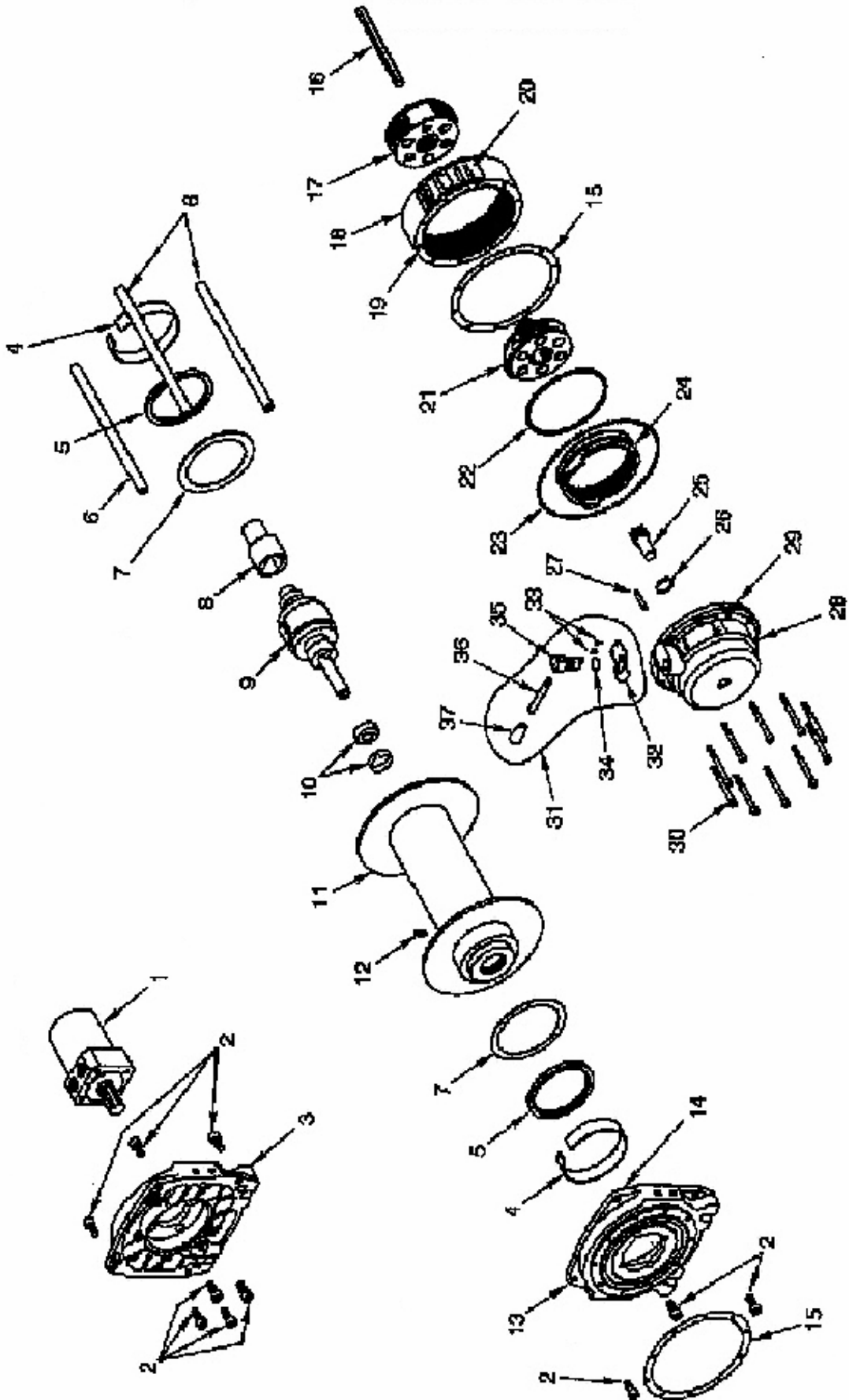


## WINCH ASSEMBLY

VIEW: Back Of TractorVIEW: Top Of Winch

ITEM	NOTES	PART#	QTY	DESCRIPTION
1		7678	1	WINCH
2		5601063	2	FITTING
3		7151	12	CAPSCREW, HEX 12MM X 35MM
4		589072	12	FLATWASHER, 7/16" SAE

# Winch Assembly



Item	Notes	Part#	Qty	Description
1		Call Layton Manufacturing Co. Service Department (503) 585-4888	1	Motor, Hydraulic
2			10	Capscrew, 3/8-16x3/4 SOC HD
3			1	S/P Drum Support Assembly, Hydraulic Motor End
4			2	Bushing, Drum Nylatron, CIM LG FRM
5			2	(Vins) Seal, Radial Oil
6			3	Tie Rod, Tapped, .625 Dia. X 10.580
7			2	Washer, Thrust, Nylatron, CIM LG FRM
8			1	Driver, Brake, Hydraulic Brake
9			1	S/P Disk Brake Assembly, CCW Hydraulic
10			1	S/P Bearing and Tolerance Ring
11			1	S/P Drum Assembly, STD
12			1	Screw, Set, Rope Anchor
13			1	S/P Drum Support Assembly, Geartrain End
14			1	Label, Drum Rotation
15			2	Gasket, Ring Gear
16			1	Hex Shaft, Drive, 1/2 x 6.257
17			1	Carrier Assembly, Stage 3, 4340 Planet
18			1	S/P Ring Gear Assembly, Series 12
19			1	Label, Warning Series Winches
20			1	Label, Nameplate, Series 12
21			1	(R/KB) Carrier Assembly, Stage 2
22			1	Retaining Ring, Locking Ends, Spiral
23			1	S/P Ball Set, 3/16, 85pc
24			1	Ring Gear, Clutch, M10
25			1	Gear, Sun, 15T
26			1	Thrust Plate, Fs Winch
27			1	Pin. Clutch Retainer
28			1	S/P Gear Housing Assembly, Series 12
29			1	Label, Clutch Engagement
30			10	Capscrew, 1/4-20x3 SOC HD, GR8
31			1	S/P Clutch Lever Assembly
32			1	Latch, Safety, Winch Clutch, .855 Dia.
33			2	(KB) 10-24x1/2 Type F, Phillip Pan Head
34			1	Seal, O-Ring, AS568-113
35			1	Clutch Shaft
36			1	Clutch Lever, CCW
37			1	Knob
38			1	Fairlead Roller Assembly (Not Shown)